



What we want / What we get

Public investment + Disaster risk management and climate action

CDMX, 2018

This thing is serious

Disaster risk impacts are on the rise

Global losses: US\$ 520 billions.

People pushed into poverty: 26 millions.

Average cost 2007 – 2016: US\$ 153 billions.



Public investment is critical for achieving SDG

P.I. roles

Deliver public services (health, education).

Foster economic growth.

Close asymetries whithin countries.



P.I. is a very complex realm

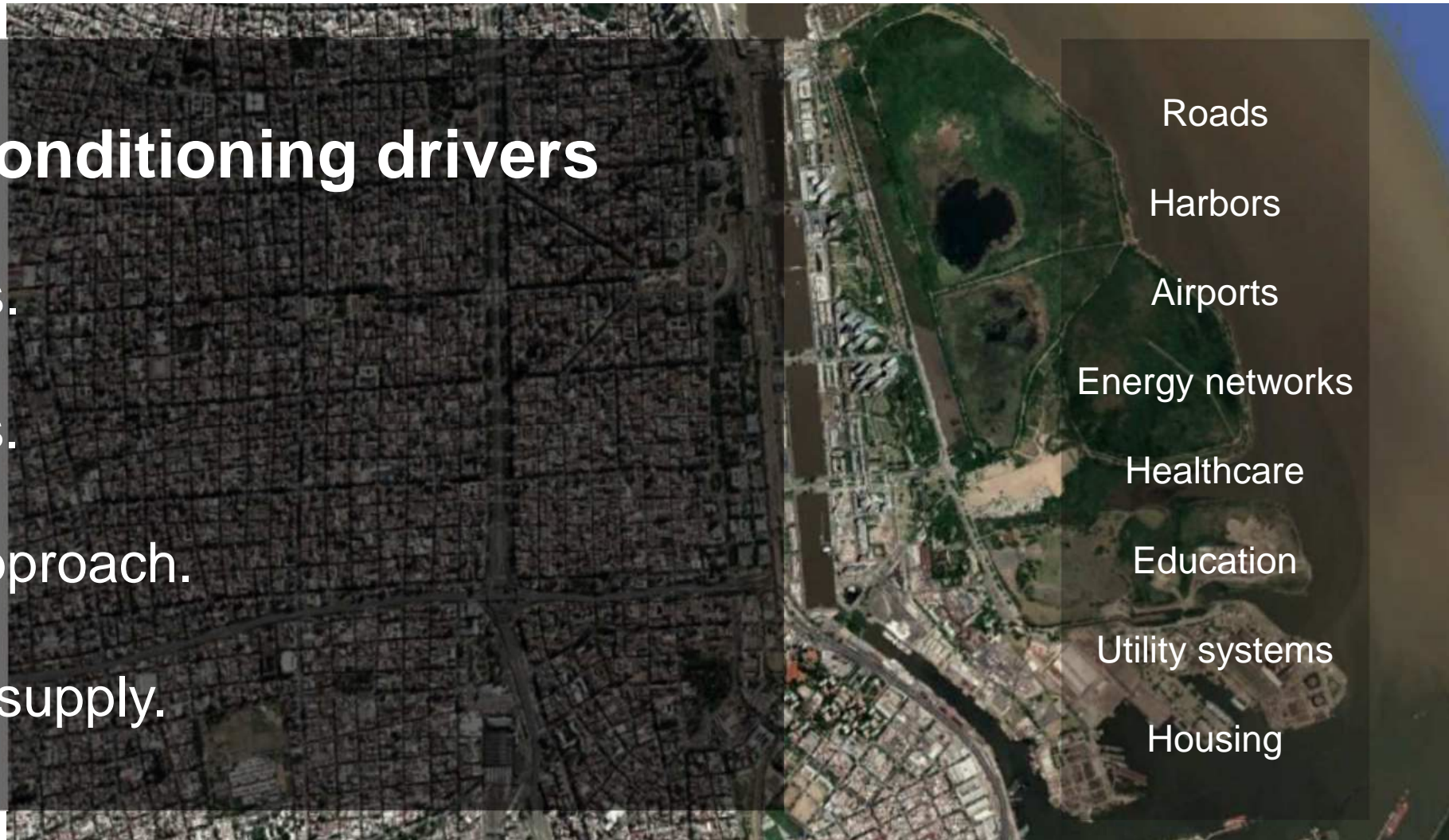
P.I. conditioning drivers

Institutions.

Resources.

Political approach.

Demand / supply.



Roads

Harbors

Airports

Energy networks

Healthcare

Education

Utility systems

Housing

P.I. is a very complex realm

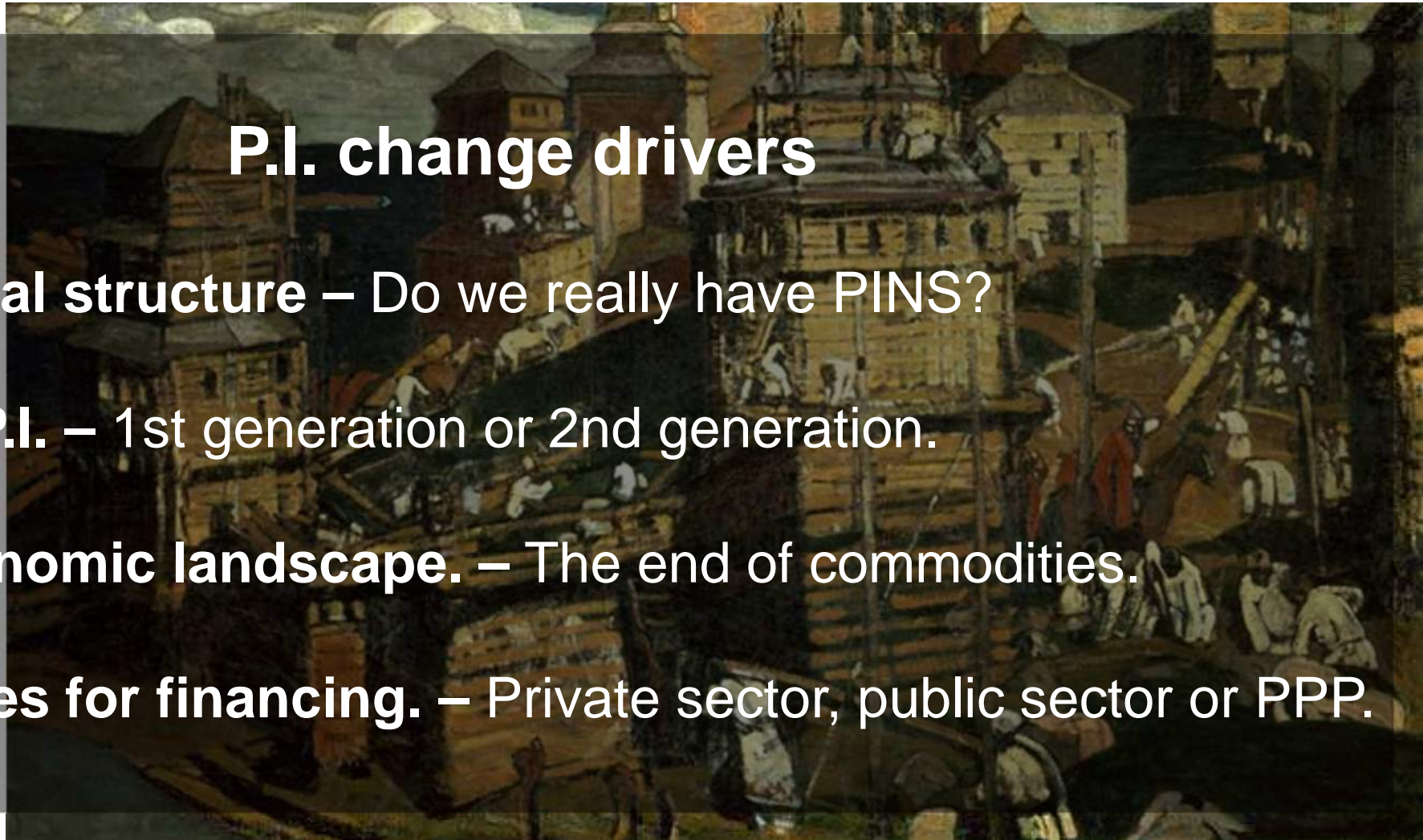
P.I. change drivers

Institutional structure – Do we really have PINS?

Types of P.I. – 1st generation or 2nd generation.

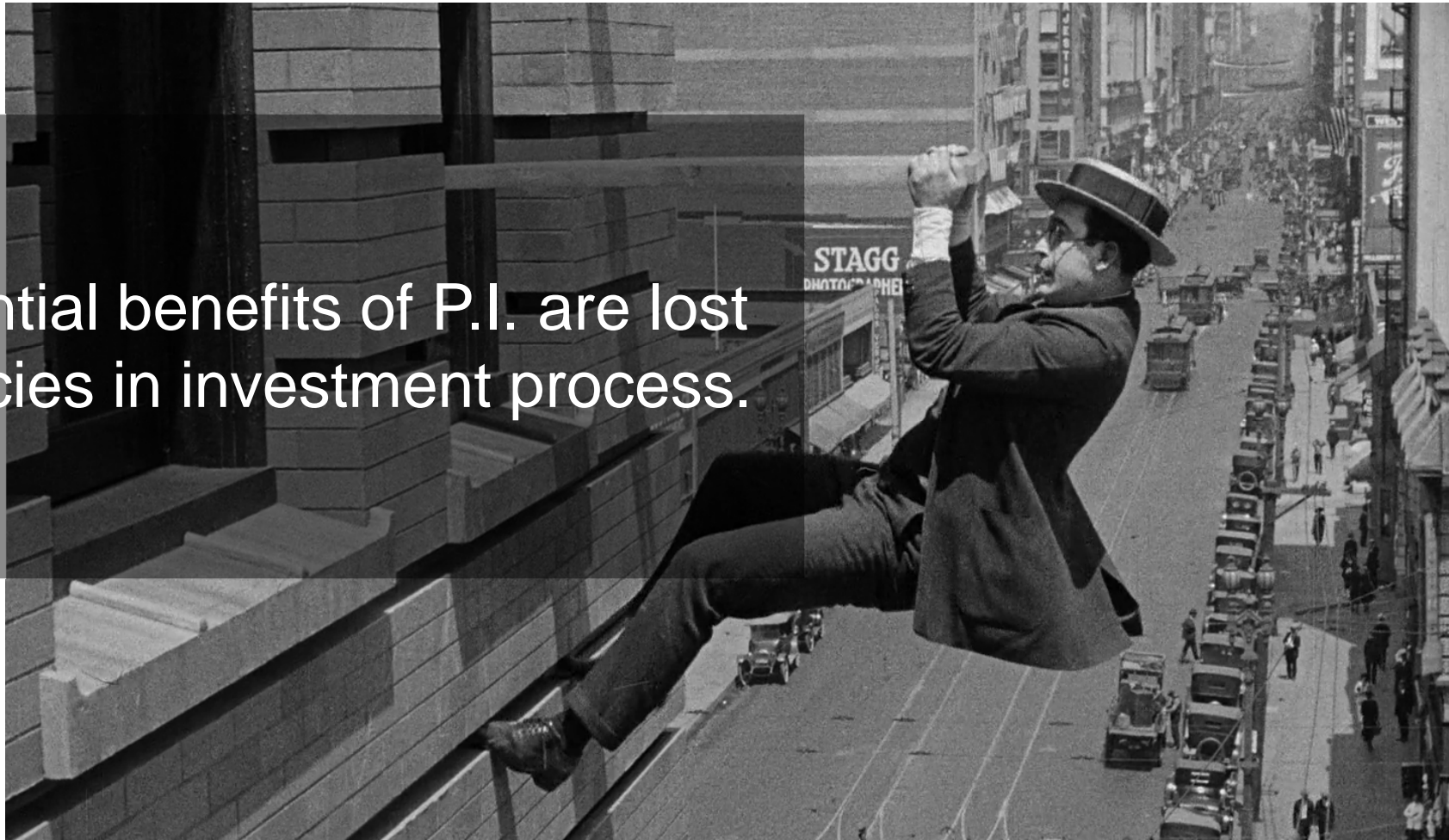
Macroeconomic landscape. – The end of commodities.

Alternatives for financing. – Private sector, public sector or PPP.



Efficiency is **critical** for P.I.

30% of the potential benefits of P.I. are lost due to inefficiencies in investment process.



Efficiency is **critical** for P.I.

We design a project to last 50 years. It gets damaged by a flood 10 years after it entered into service...

How efficient are we?



Efficiency is **critical** for P.I.

Disaster risk impacts are at the core of P.I. inefficiency



P.I. near scenario in LAC

What do we know so far?



P.I. near scenario in LAC

What do we know so far?



Needs



P.I. near scenario in LAC

What do we know so far?



Needs



Costs



P.I. near scenario in LAC

What do we know so far?



Needs



Costs



Disaster risk



P.I. near scenario in LAC

What do we know so far?



Needs



Costs



Disaster risk

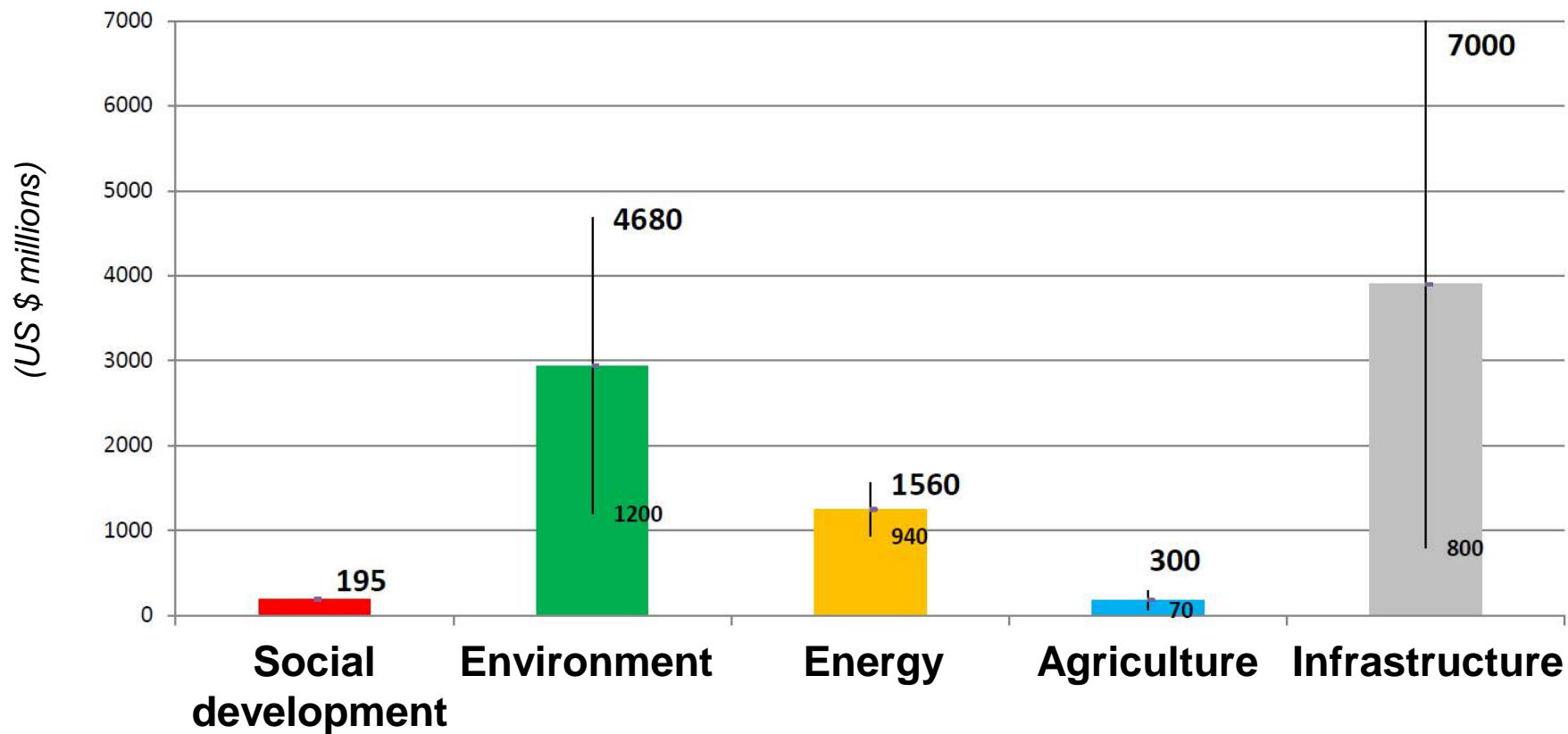


Resources

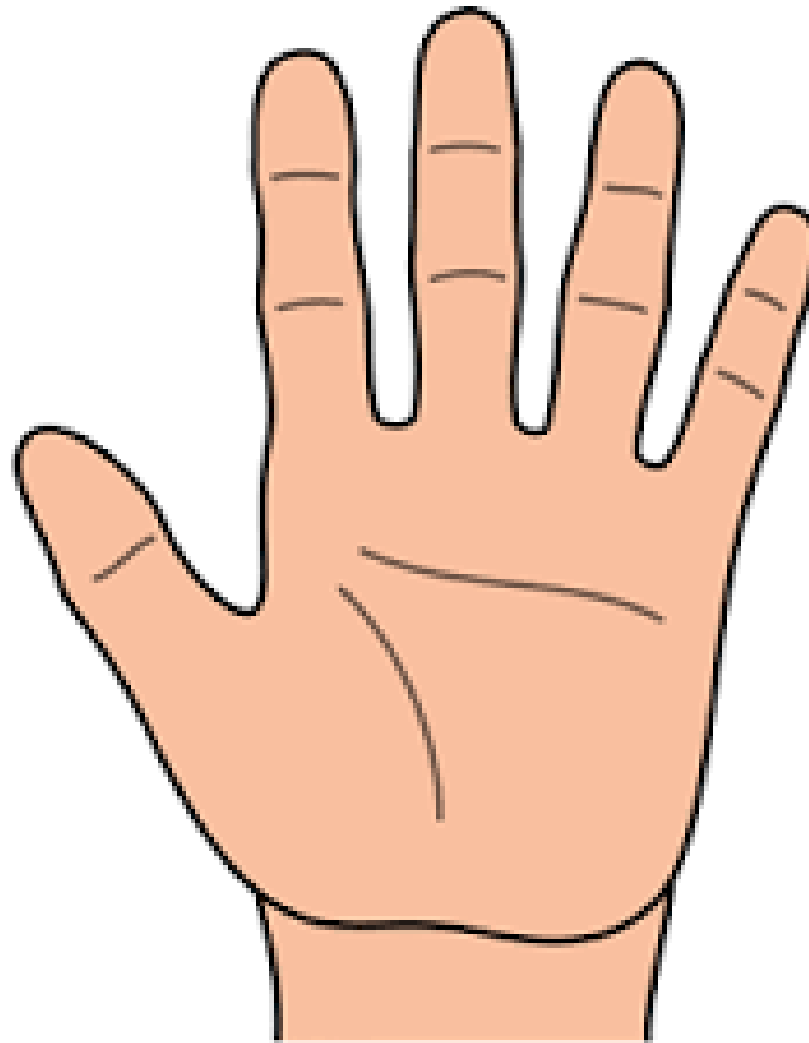


P.I. near scenario in LAC

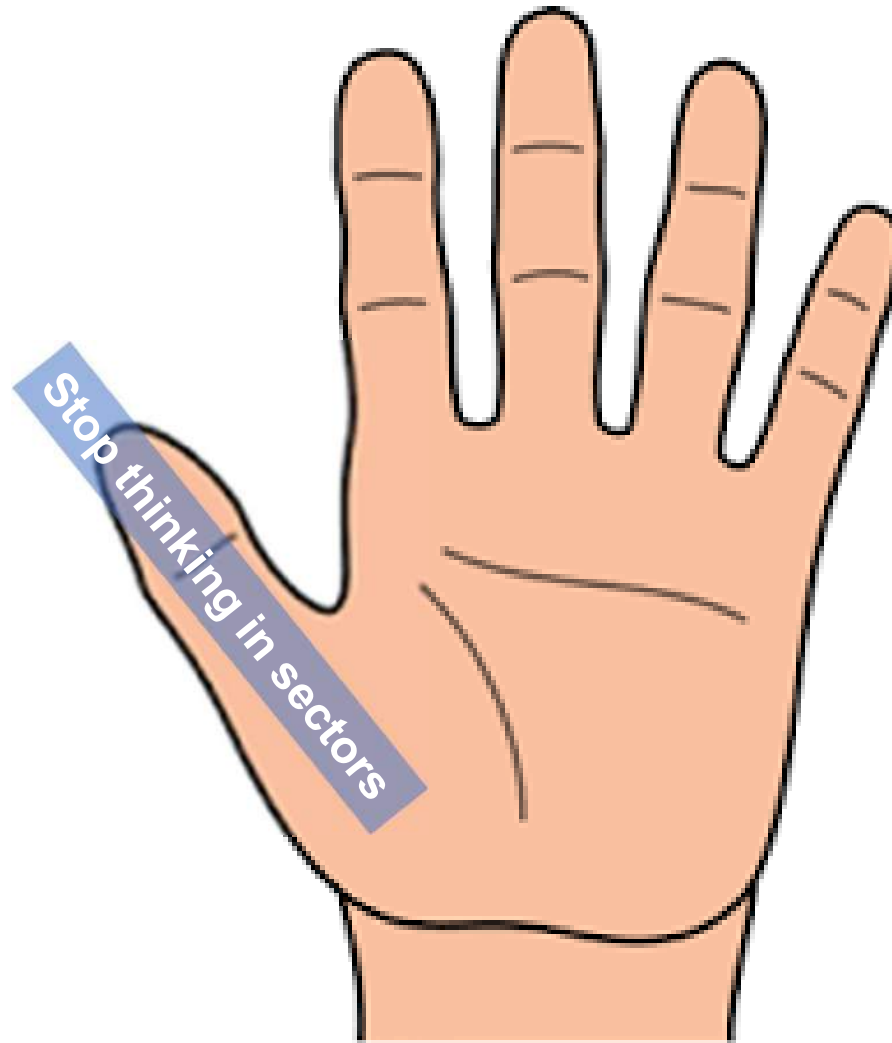
How much do we need to achieve SDG?



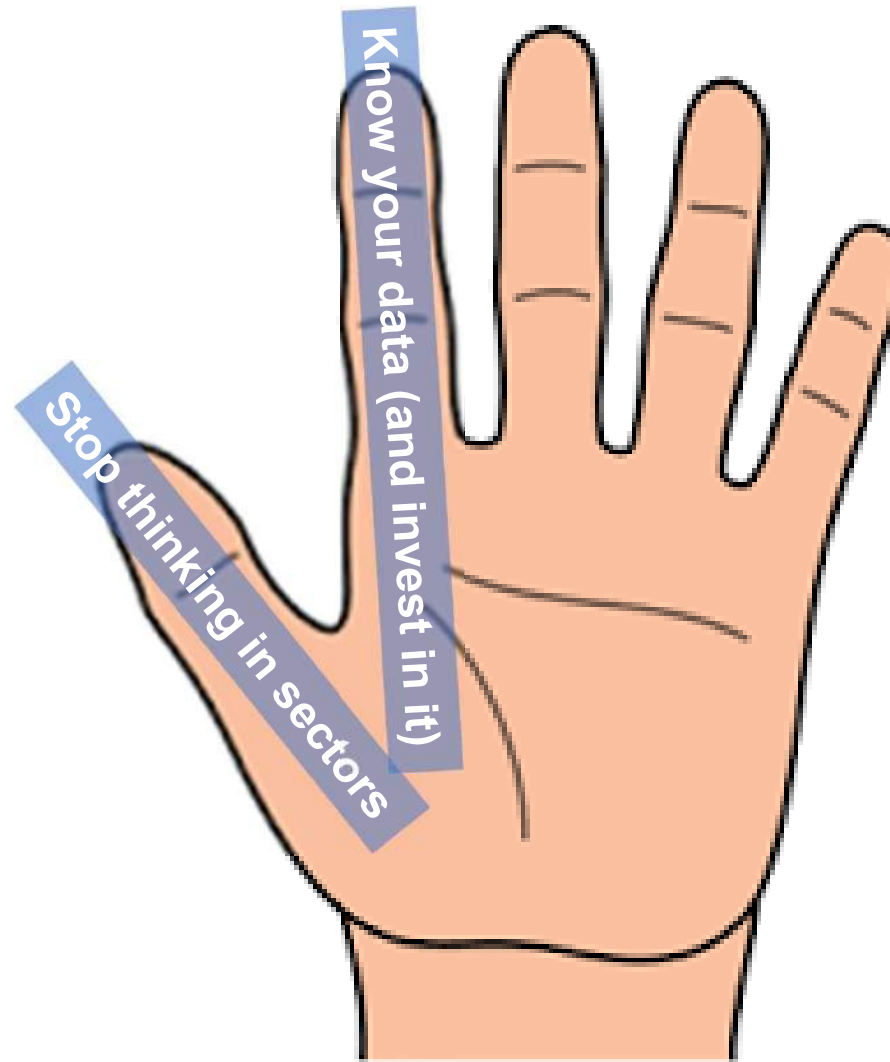
What can we do?



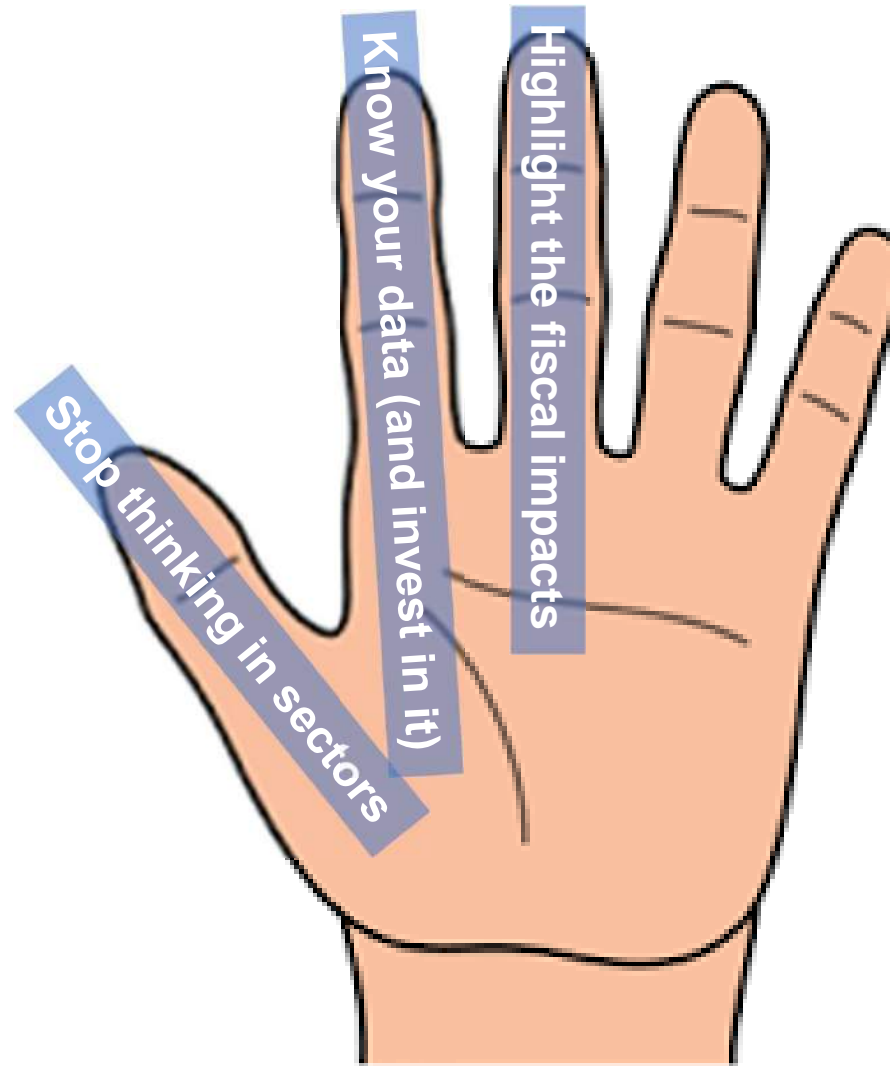
What can we do?



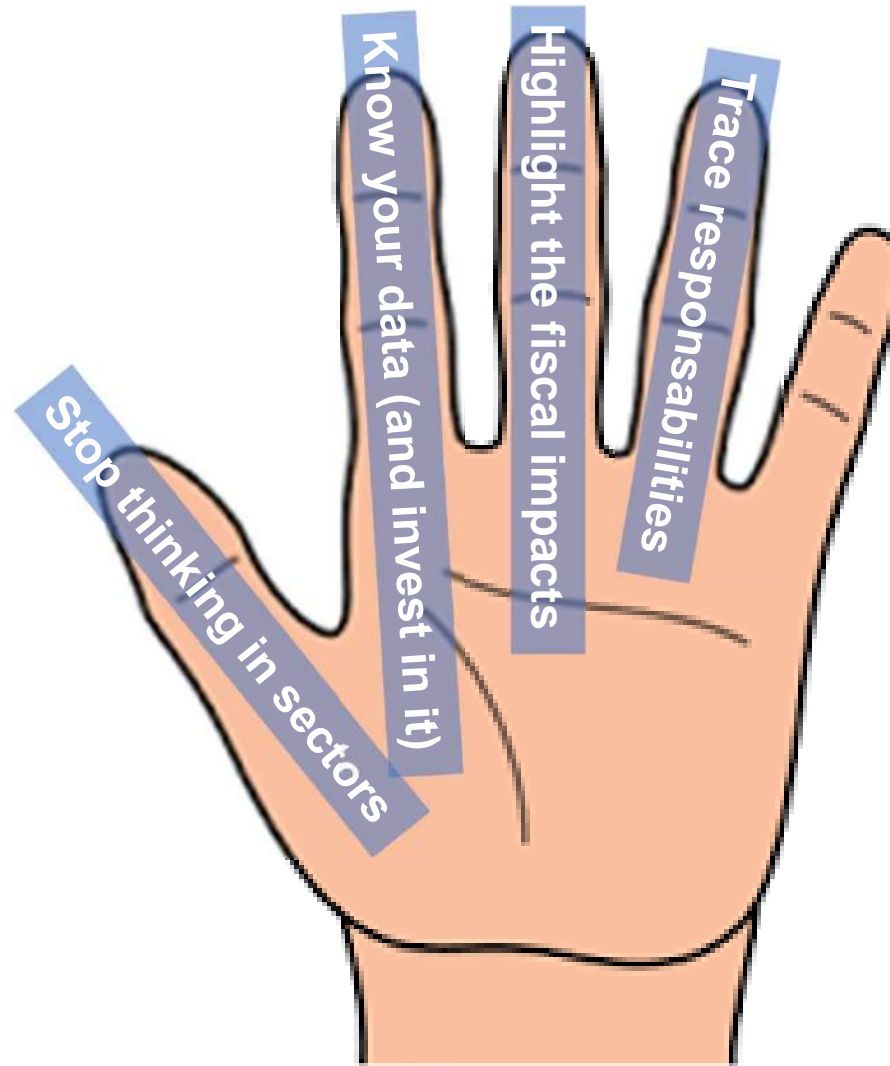
What can we do?



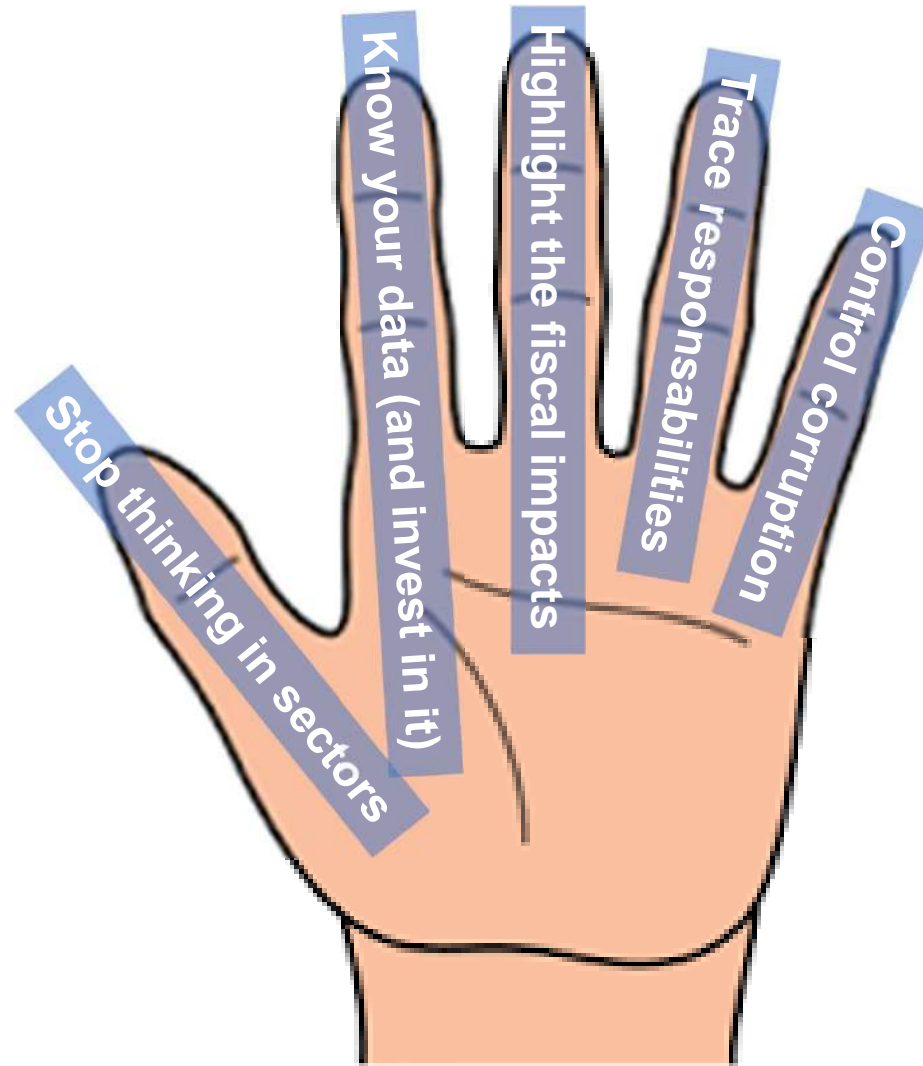
What can we do?



What can we do?



What can we do?



Thanks

abrenes@flacso.org