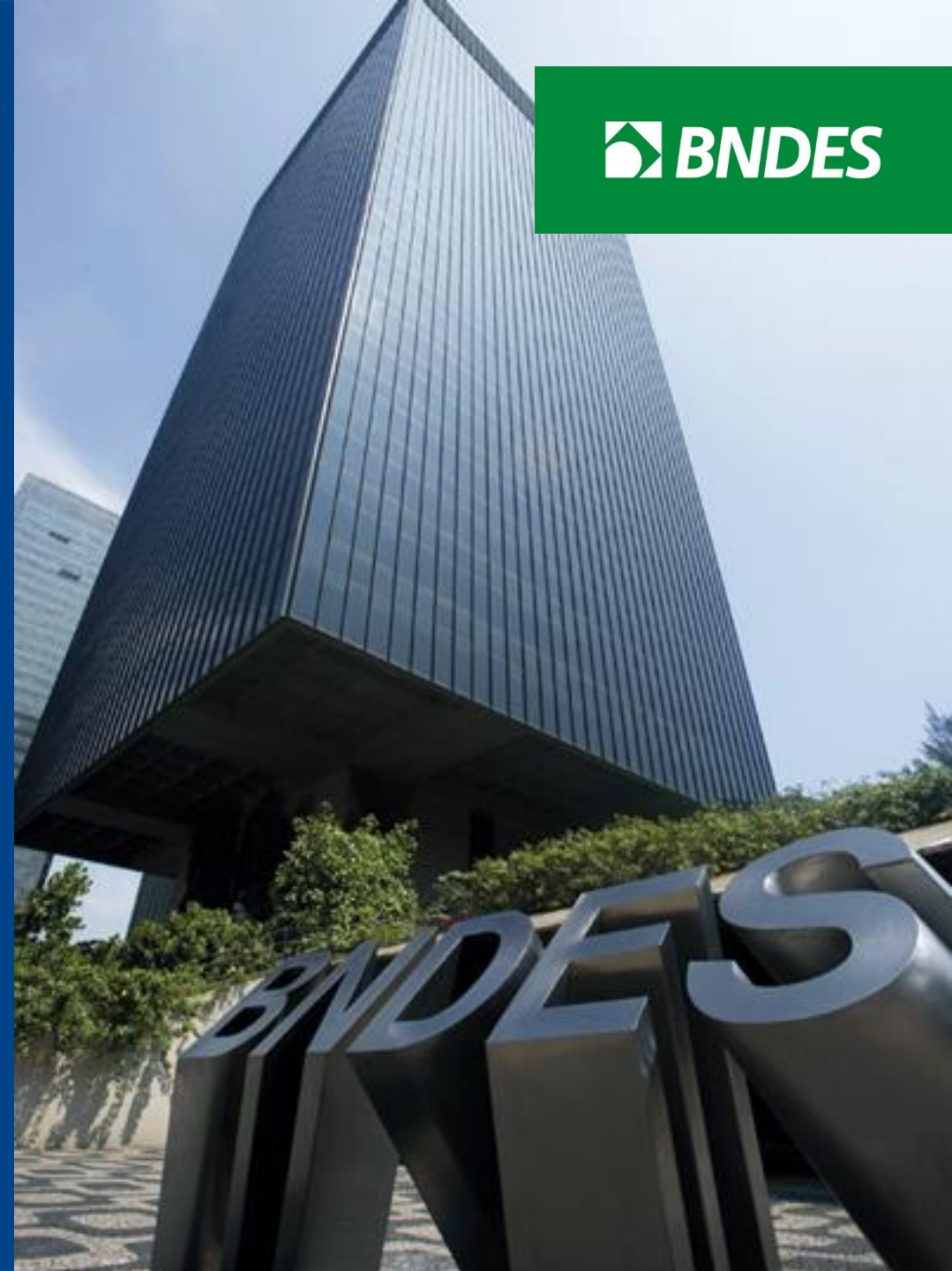


Climate Risk-Sensitive Planning of Public Investments:

The Latin American Experience

BNDES

May 2018



General information

BNDES in numbers

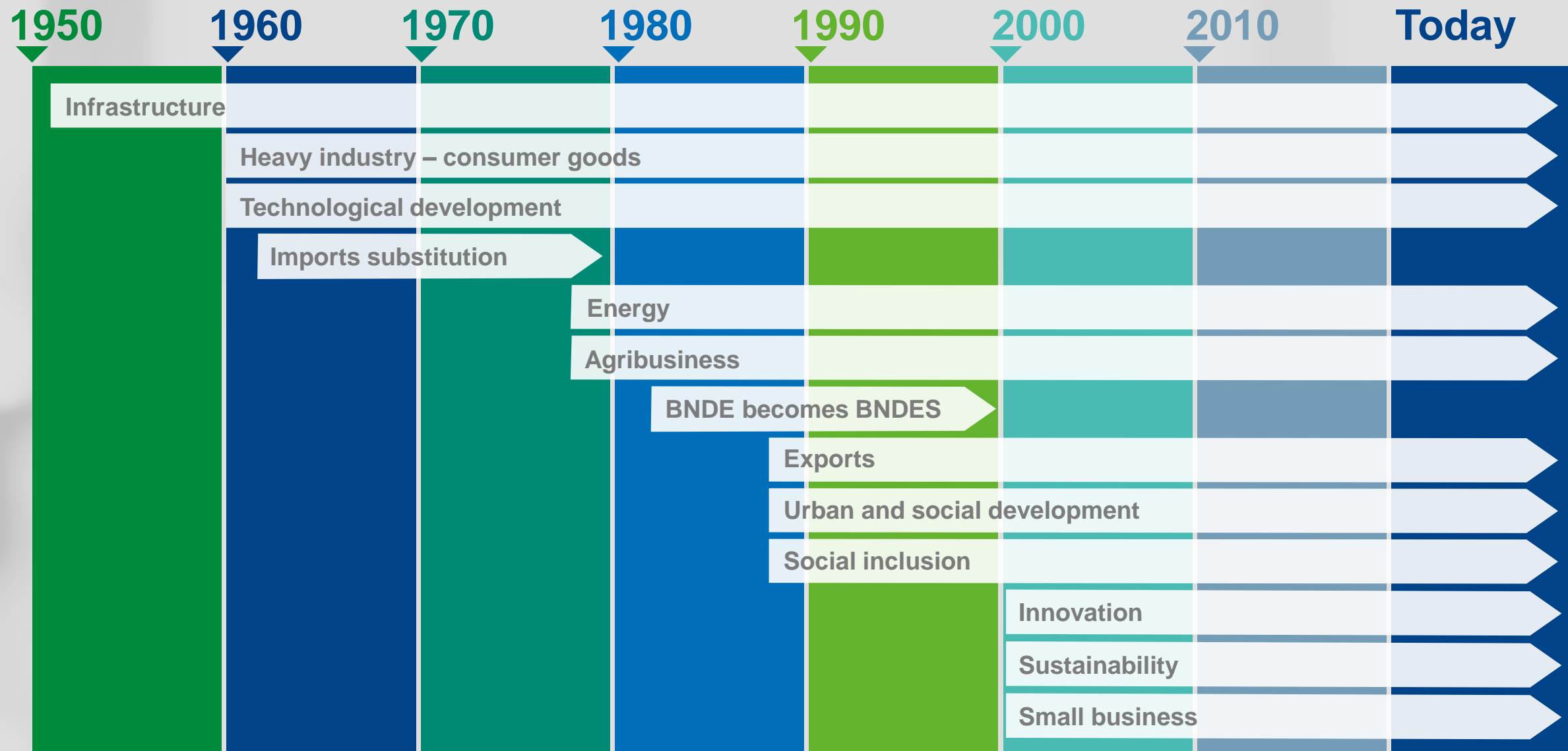
BNDES & IPACC II

Extreme events: adaptation and recovery



- ▶ Founded on June 20th, 1952.
- ▶ 100% State-owned company under private law, linked to the Ministry of Planning, Development and Management.
- ▶ Key instrument for implementation of Federal Government's industrial and infrastructure policies.
- ▶ Main provider of long-term financing in Brazil, especially for investment projects in the infrastructure sector.
- ▶ Mission: to promote sustainable and competitive development of the Brazilian economy by promoting job creation and reducing social and regional inequalities.

General information // Timeline



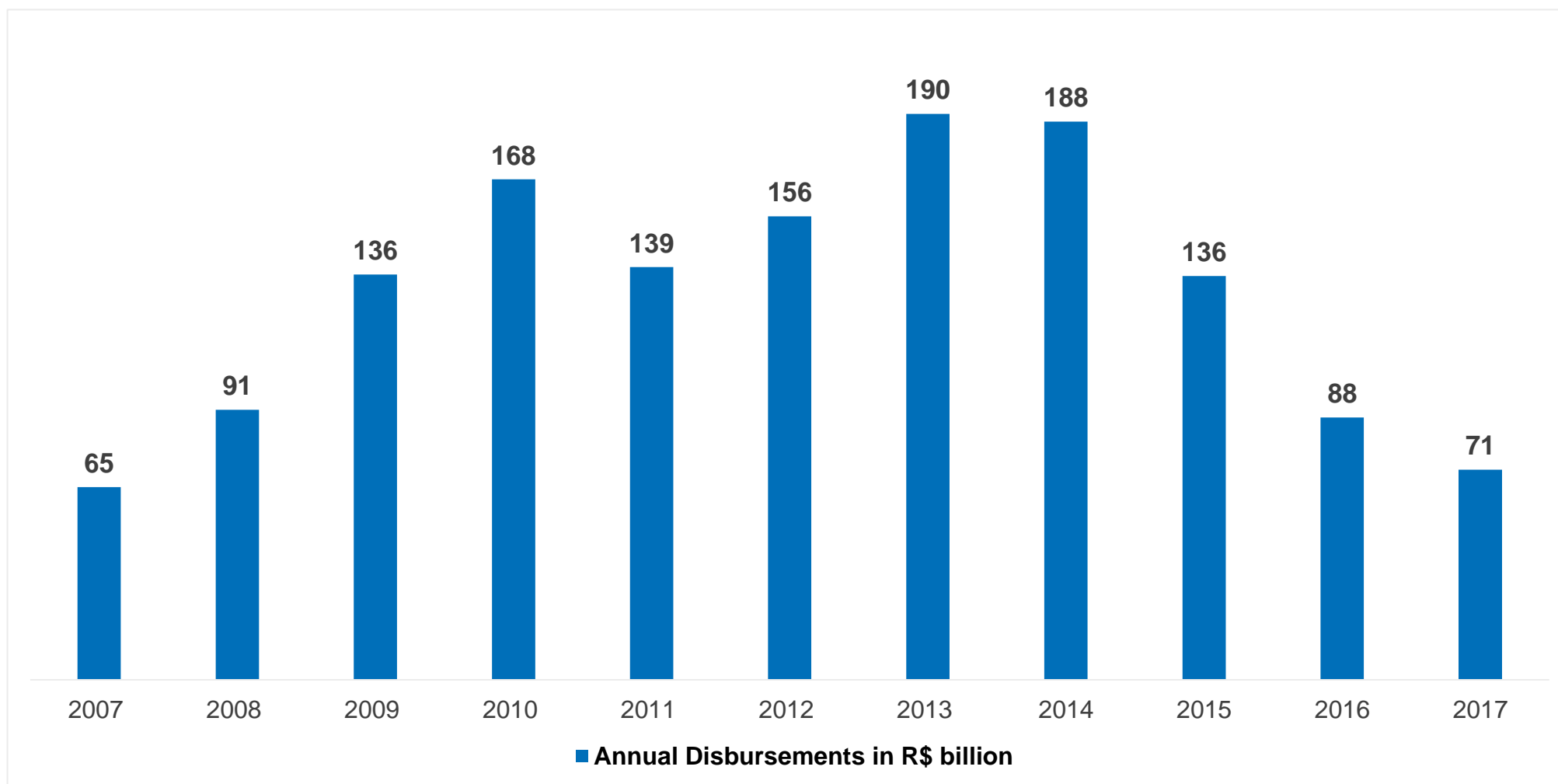
General information

BNDES in numbers

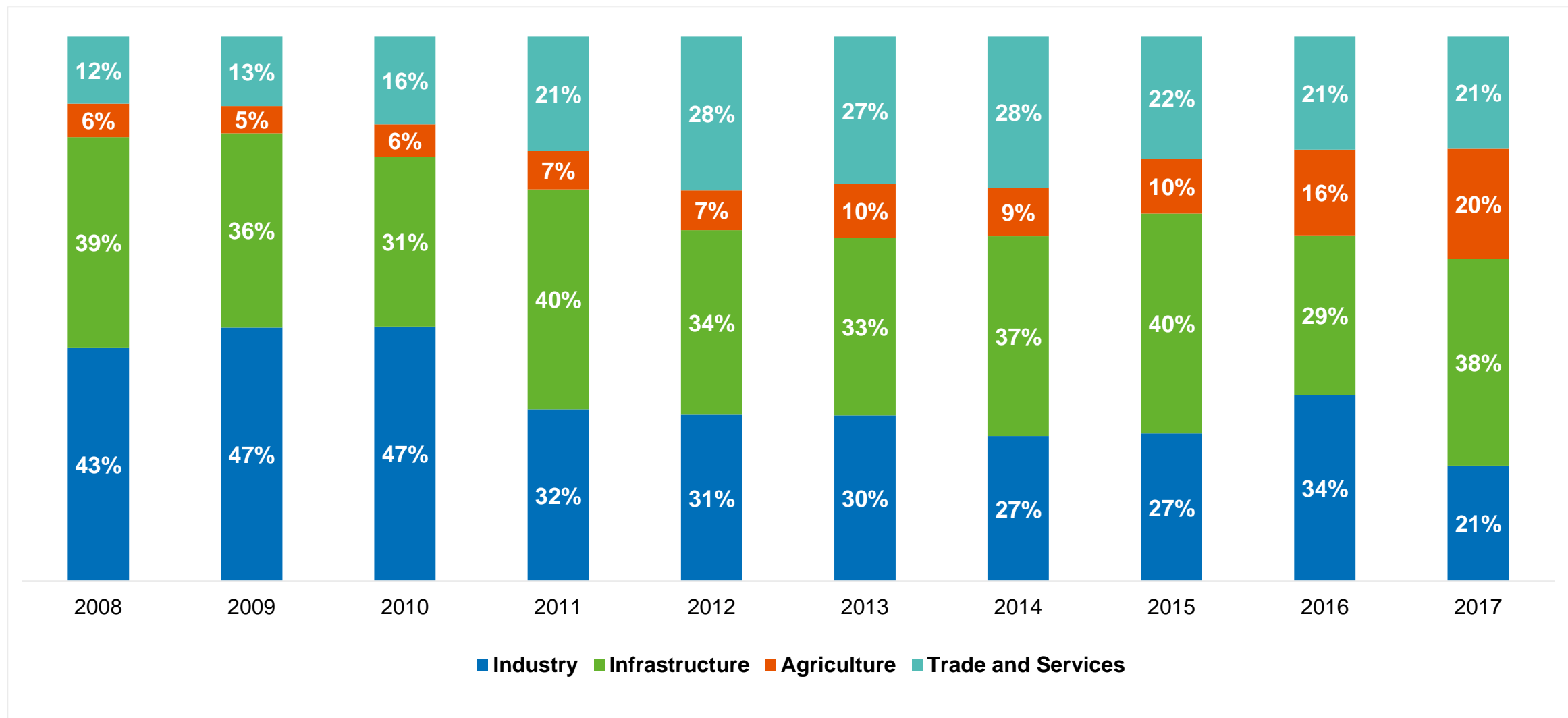
BNDES & IPACC II

Extreme events: adaptation and recovery





Disbursements // Disbursements by business sector



Disbursements in infrastructure sector // R\$ 25.9 bi in 2016

ENERGY

Generation (Hydro, Wind, Solar, Biomass, Thermal), Transmission Lines, Energy Efficiency, Distribution

INVESTMENT IN GENERATION OF RENEWABLE ELECTRIC ENERGY (2016)

1,247 MW



In wind power

178 MW



In PCHs

1,100 MW

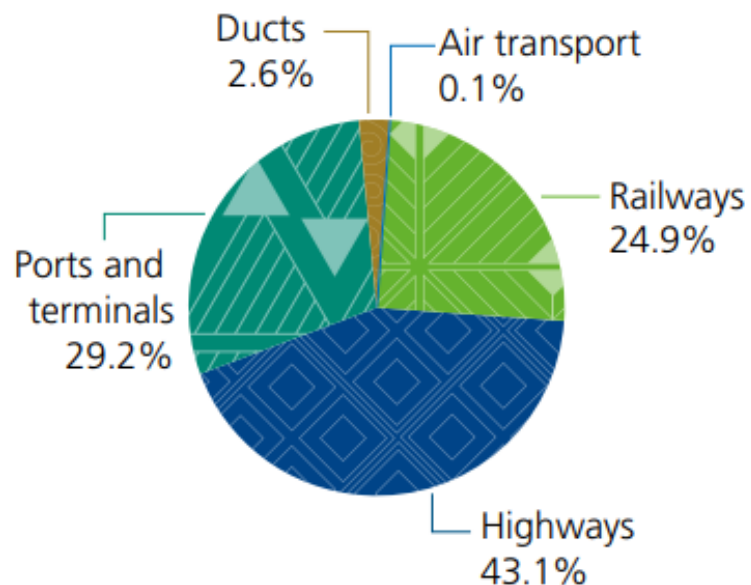


In hydroelectric plants

This capacity will serve
6.3 MILLION HOUSEHOLDS

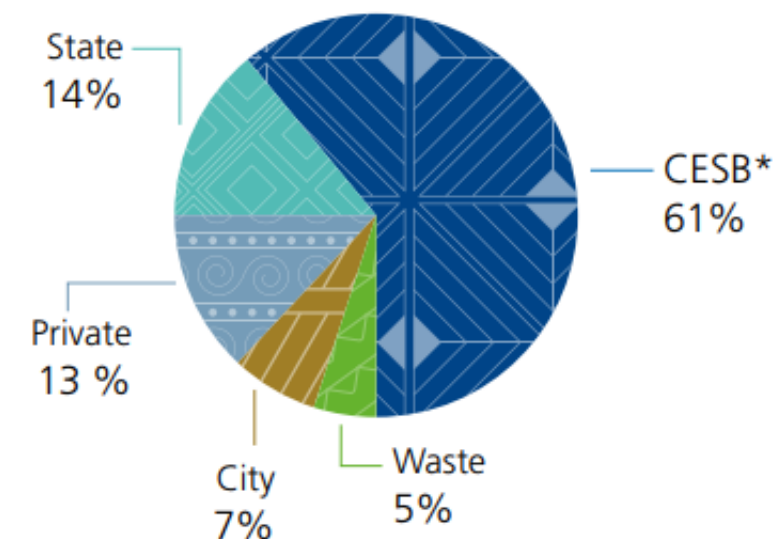
LOGISTICS & URBAN MOBILITY

Roads, Railways, Ports, Port Terminals, Airports, Urban Trains, Metro, BRTs, VLTs



SANITATION

Water Supply, Sewage Collection and Treatment, Collection and Final Disposal of Solid Waste



*CESB: basic sanitation state companies.

General information

BNDES in numbers

BNDES & IPACC II

Extreme events: adaptation and recovery



CAPACITY BUILDING

analysis of risks associated with
climate change in investment projects

BENCHMARKING

financial institutions with advanced
climate change practices

**FRAMEWORK
DEVELOPMENT**

- methodology, tools and information sources
- pilot application using infrastructure projects supported by BNDES

**INTERNAL &
EXTERNAL
DISSEMINATION**GOAL

Reduce extreme events impacts in brazil infrastructure investments



CAPACITY BUILDING

analysis of risks associated with
climate change in investment projects

- **Multidisciplinary team**
 - Socio-Environmental, Planning, Credit and Risk Management Divisions
 - Environmental, Planning and Finance Ministries
- **Sensibilization about climate change risks relevance**
 - Global
 - National
 - BNDES core business
- **Content building for future disclosure**



BENCHMARKING

financial institutions with advanced
climate change practices

- Focus in Development Banks
 - Good practices in climate change risks management in investment projects
- Practical experiences
 - Methodologies
 - Tools
 - Information sources/databases
 - Governance and internal procedures
- Lessons learned



FRAMEWORK DEVELOPMENT

- methodology, tools and information sources
- pilot application using infrastructure projects supported by BNDES

- Evaluation of possible ways to implement knowledge acquired
 - Capacity building
 - Benchmarking
- Climate change risk evaluation framework for infrastructure investments
 - Individual projects
 - Portfolio projects
 - Different sectors
- Practical application to validate framework proposal



INTERNAL & EXTERNAL DISSEMINATION

- Internal dissemination
 - Proposal of possible ways to implement results achieved in BNDES workflow
 - Socioenvironmental Sustainability Committee
 - Others committees / Board of Directors
- External disclosure
 - Public report
 - Workshop



Climate Action

in Financial Institutions

PRINCIPLES FOR MAINSTREAMING CLIMATE ACTION

Coalition of public and private financial institutions around the globe aiming to

- **adopt a pathway to systematically integrate climate change considerations across their strategies, programs and operations;**
- **provide financial institutions an opportunity to learn from each other, to disseminate good practice and lessons learned and to collaborate on areas of common interest.**

PRINCIPLE 1:

COMMIT

to Climate
strategies

PRINCIPLE 2:

MANAGE

Climate
Risks

PRINCIPLE 3

PROMOTE

Climate Smart
Objectives

PRINCIPLE 4:

IMPROVE

Climate
Performance

PRINCIPLE 5:

ACCOUNT

for Your
Climate Action

General information

BNDES in numbers

BNDES & IPACC II

Extreme events: adaptation and recovery



Adaptation: water for food production in semi-arid region

CONSTRUCTION OF CISTERNS IN THE SEMI-ARID REGION

In 2016, we supported the construction of approximately 3,000 cisterns in the semi-arid region for food production. These units enable the families to store water for drought periods and produce food for consumption and trade.

With the rains of 2015, in some regions visited in 2016, the results can already be observed, such as increased plantations and animal culture, allowing improvements in the feeding of beneficiaries and trade of surplus production.

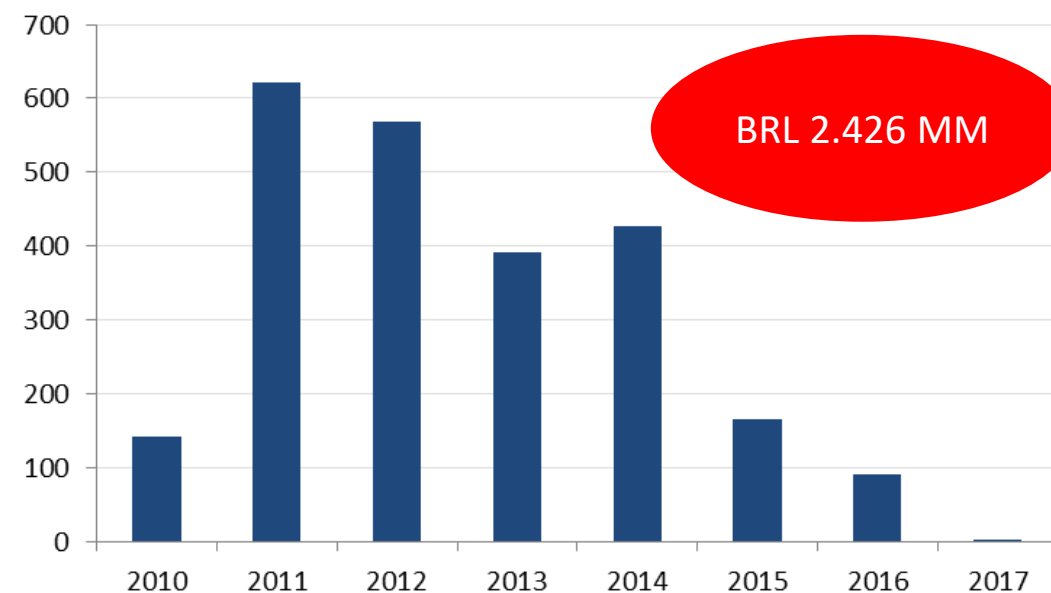


Cistern in the municipality of Pedro Avelino (RN) allows families to store water for drought periods. Photography: Luciana Chaves/BNDES Collection

Emergency program for reconstruction of municipalities affected by natural disasters

BNDES's contribution to support the resumption of economic activity

Disbursements – BNDES PER – BRL MM



Thank you!

campos.odette@bndes.gov.br



BNDES website
www.bndes.gov.br



Contact Center
0800 702 6337
International calls
+55 21 2052 6337



Ombudsperson
0800 702 6307
www.bndes.gov.br/ouvidoria



Contact us
www.bndes.gov.br/faleconosco



facebook.com/bndes.imprensa



twitter.com/bndes_imprensa



youtube.com/bndesgovbr



slideshare.net/bndes